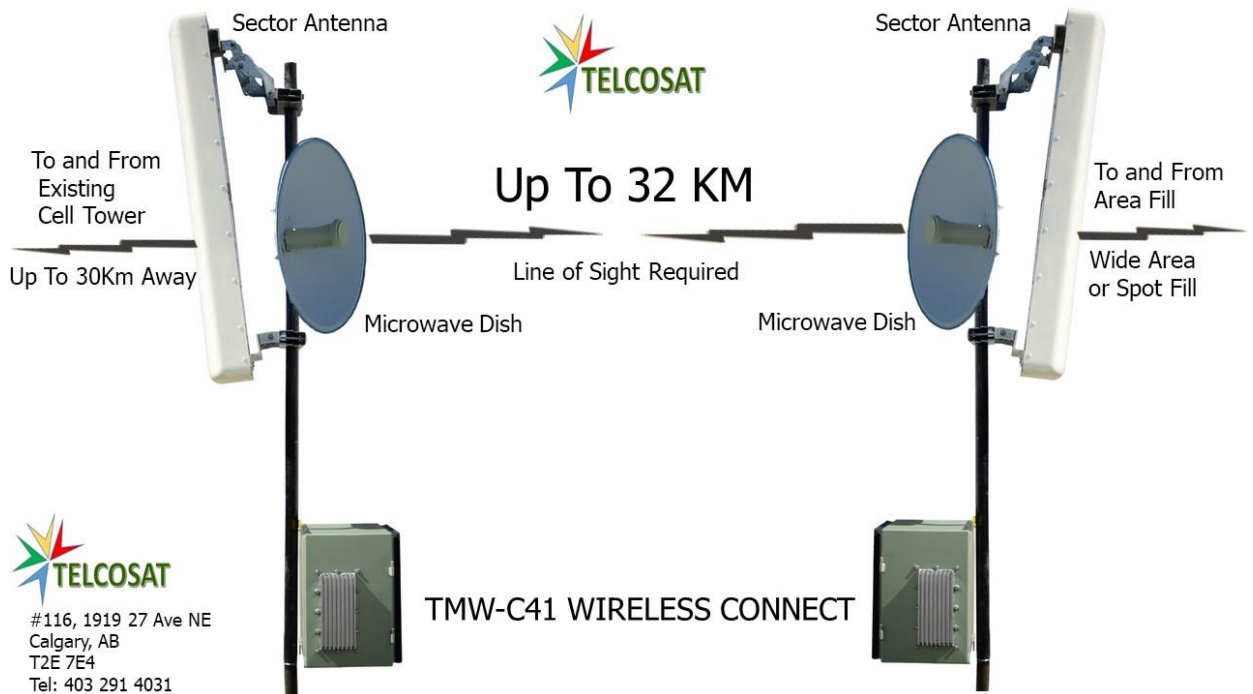




NEW PRODUCT ALERT

Telcosat Cellular to Microwave C41 Repeater



Customized Solutions for your application.

If you have requirements not listed here, please contact us and we will do our very best to provide a customised solution for your requirements.

Experience Seamless Connectivity with Our Cell Phone Repeater with Microwave Link

Are you struggling with poor cellular reception? Introducing our Cell Phone Repeater with Microwave Link—a cutting-edge solution designed to amplify cellular signals and extend coverage, ensuring you stay connected no matter where you are.





Why Choose Our Cell Phone Repeater with Microwave Link?

Seamless Connectivity Over Long Distances Imagine being able to extend cellular coverage from a cell tower located 20 kilometers (12 miles) away to a target site another 20 kilometers (12 miles) further. Our Cell Phone Repeater with Microwave Link makes this possible. Install our Master Unit at a location with cellular signals, and it will transmit these signals via a microwave link to the Remote Unit, providing robust cellular coverage for up to 40 kilometers (24 miles) from the original cell tower.

Key Features:

Microwave Link Technology

- Utilizes advanced microwave technology to transmit and receive cellular signals over long distances, overcoming obstacles and terrain challenges.

Flexible Mounting Options

- Install units on buildings, poles, towers, portable trailers, or temporary towers to suit your specific needs.

Wide Coverage

- Provides extended coverage area, effectively amplifying cellular signals across large indoor, or wide area, or spot fill outdoor locations.

Enhanced Signal Strength

- Boosts signal strength to improve call quality, data speeds, and overall connectivity for users within the coverage area.

Industrial Weather-Resistant Design

- Able to withstand harsh environmental conditions, making it ideal for outdoor installations in various climates.

Scalable and Modular

- Easily scalable with a modular design, allowing for the addition of multiple repeaters to expand coverage as needed.





90% Less Coax

- Extensive use of coax cable creates signal loss. Our design reduces the use of coax cable to a minimum ensuring that there will be maximum signal where required.

Cellular Provider Benefit

- Low cost way to improve cell tower capacity.
- Low cost method to incorporate previously uneconomical locations.

Ideal Applications:

Remote Rural Areas

- Perfect for farms, ranches, and mountainous regions where cellular coverage is limited.

Emergency Response

- Improve communication for emergency response teams in areas with unreliable cellular coverage.

Remote Signal Interception and Monitoring

- Operates efficiently with battery/solar panels in remote areas for signal interception and monitoring.

Remote Military Camps

- Quickly deployable solution to improve cellular wireless coverage in remote military camps.

Border Security

- Extend cellular communications for border security operations up to 32 kilometers (line of sight).

Tunnel Coverage

- Daisy chain multiple units to provide extensive cellular coverage in tunnels.





Benefits:

Enhanced Connectivity

- Significantly improves cellular signal strength and reliability for seamless communication.

Cost-Effective Solution

- Lower cost than traditional methods of improving cellular coverage, such as installing new towers.

Reliable Communication

- Provides permanent or temporary dependable communication during emergencies, enhancing coordination and response efforts.

Customized Solutions for Your Needs

Have unique requirements? Contact us today, and we'll tailor a solution to meet your specific needs.

Stay connected with our innovative Cell Phone Repeater with Microwave Link and experience the difference in cellular coverage and connectivity.



Product Specifications:

Uplink Frequency Range (MHz):	698-716/ 778-787/ 824-849/ 1850-1910/ 1710-1780
Downlink Frequency Range (MHz):	728-746/ 746-757/ 869-894/ 1930-1960/ 2110-2180
Dual Band Option.	Can be ordered in customized dual bands
Supported Standards:	4G/ LTE/ 5G Cellular Standards
Maximum Gain	95dB
Maximum Downlink RF Power	30 dBm (1W)
Maximum Uplink RF Power	30 dBm (1W)
Impedance	50 Ohm
Uplink Microwave Frequency Range (MHz):	5170-5330
Downlink Microwave Frequency Range (MHz):	5490-5835
RF Connectors	N-Females (both ends)
Power Consumption	<75W
AC Input	AC 110V/ AC220V
DC Input	DC 24V/ DC 48V
Operation Temperature	-40°C to +85°C
Dimensions	Size: H 18"W 16.5" D 12" , 45 x 40.64 x 30.48 cm
Weight	55lbs (depending on options)